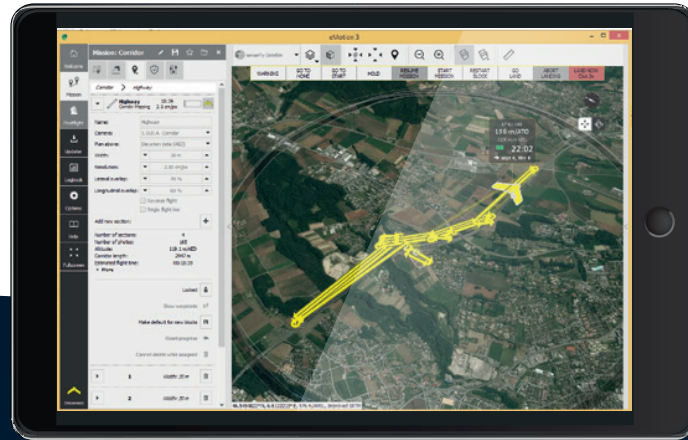


senseFly Corridor

Linear Mapping Made Easy



senseFly Corridor is a combined hardware and software solution, available for any eBee drone that carries a senseFly S.O.D.A. camera



Better ground resolutions

A vertical camera position enables you to fly closer to the ground, while still achieving the image overlap required. The result: ground resolutions of down to 0.6 inches (1.5 cm) per pixel.

Makes corridor mapping easy

eMotion 3's Corridor Mapping mission block makes flying linear routes a breeze: simply load a KML/shape file/background map, define your corridor (clicking each time the route changes direction) and specify the width & ground resolution required.

Fewer images = shorter processing times

Compared to a landscape-position camera, senseFly Corridor requires 30% fewer images to map the same linear route. This, in turn, means 30% shorter image processing times.

