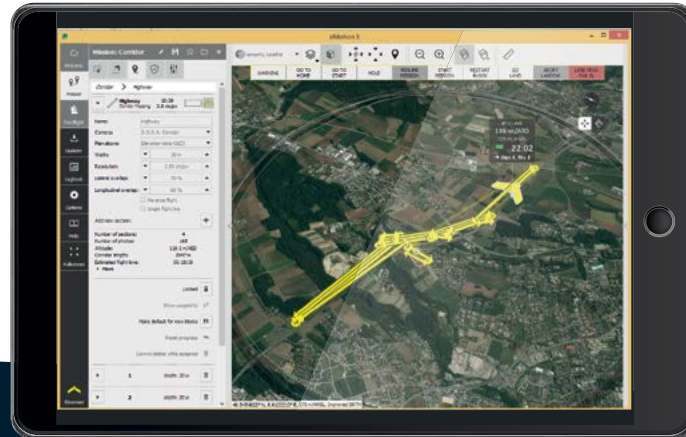


— senseFly Corridor  
Linear Mapping Made Easy —



**senseFly Corridor** is a combined hardware and software solution, available for any eBee drone that carries a senseFly S.O.D.A. camera



### Better ground resolutions

A vertical camera position enables you to fly closer to the ground, while still achieving the image overlap required. The result: ground resolutions of down to 0.6 inches (1.5 cm) per pixel.

### Makes corridor mapping easy

eMotion 3<sup>®</sup> Corridor Mapping mission block makes flying linear routes a breeze: simply load a KML/shape file/background map, define your corridor (clicking each time the route changes direction) and specify the width & ground resolution required.

### Fewer images = shorter processing times

Compared to a landscape-position camera, senseFly Corridor requires 30% fewer images to map the same linear route. This, in turn, means 30% shorter image processing times.