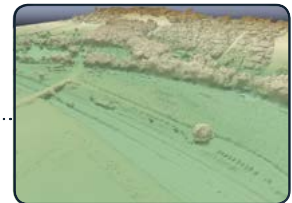
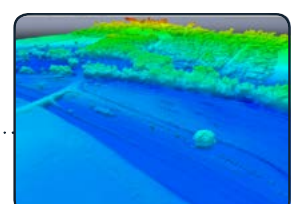


senseFly S.O.D.A.

Sensor Optimised for Drone Applications

The senseFly S.O.D.A. is the first camera to be built for professional drone photogrammetry work. It captures amazingly sharp aerial images, across a range of light conditions, allowing you to produce detailed, vivid orthomosaics and ultra-accurate 3D digital surface models.



senseFly S.O.D.A.

1-inch 20 megapixel RGB sensor

Ultra-compact, ultra-light & **fully configurable**

Global shutter

Ground resolution (flying at 122 m/400 ft AGL):
2.9 cm/pixel

Built-in **dust & shock protection** – keep mapping
across the most challenging terrain

Supplied as standard with **eBee Plus**

senseFly
Parrot Group